

State of Wyoming Corner Record

(in compliance with the CORNER PERPETUATION AND FILING ACT, Wyoming Statutes, 1997, Section 33-29-140, et. seq. and the Rules and Regulations of the Board of Registration for Professional Engineers and Professional Land Surveyors)

Reverse side of this form may be used if more space is needed.

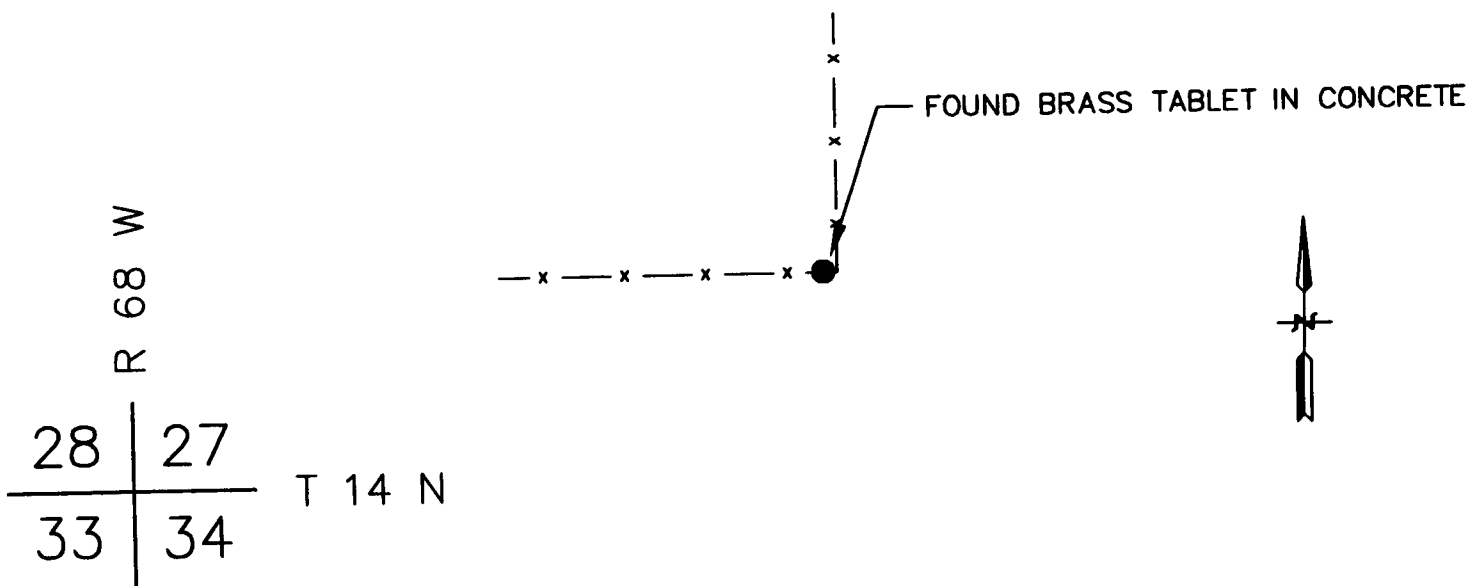
Record of original survey and citation of source of historical information (if corner is lost or obliterated). Description of corner monumentation evidence found and/or monument and accessories established to perpetuate the location of this corner. Sketch of relative location of monument, accessories, and reference points with course and distance to adjacent corner(s) (if determined in this survey). Method and rationale for reestablishment of lost or obliterated corner.

FOUND: FOUND 6"x 6" CONCRETE POST WITH A 3"x 3" BRASS TABLET IN FENCE LINE. FENCES RUN EAST AND WEST AS SHOWN

G.L.O. RECORD: UNKNOWN

SET: NOTHING SET

REFERENCES: SEE PREVIOUS FORM ON FILE AT THE LARAMIE COUNTY CLERKS OFFICE (6/73) FILED BY ROBERT C. CORBET

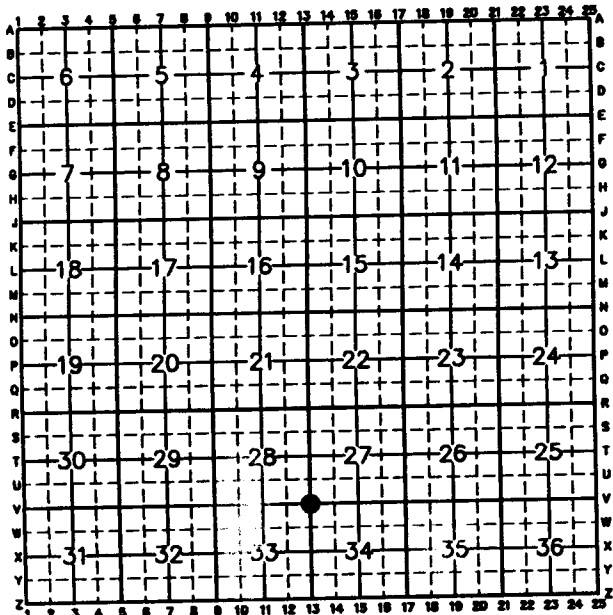


Date of Field Work: 7/01 Office Reference: 2-2237.00

Firm/Agency, Address

This corner record was prepared by me or under my direction and supervision.
SEAL & SIGNATURE

CROSS INDEX DIAGRAM



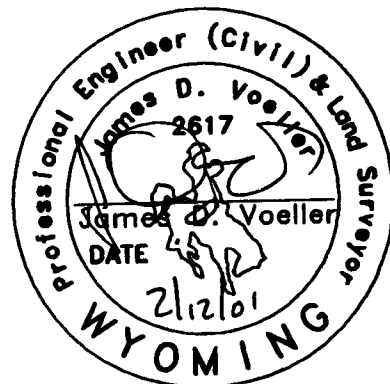
James D. Voeller, P.E. & P.L.S.

A.V.I., p.c.

2035 Westland Road

Cheyenne, WY 82001

Telephone Number: (307) 637-6017



Corner Name: SECTION CORNER Section: 33/34 T 14 R 68; 6th P.M. Cross-Index No.: V-13
SBRPEPLS/PLSW: March 1994

RECORDED 2/13/2001 AT 9:59 AM REC# 288925 JK# 1578 PG# 1113
DEBRA K. LATHROP, CLERK OF LARAMIE COUNTY, WY PAGE 1 OF 1